



FAST CREW SUPPLIER 2610

STOCK



GENERAL

Hull material	Aluminium
Superstructure material	Aluminium
Basic functions	Crew and cargo duties
Classification	Bureau Veritas
	I * Hull • MACH
	Light Ship / Fast Utility Vessel
	Sea Area 3

DIMENSIONS

Length overall	26.3 m
Beam overall	10.3 m
Depth at sides	3.7 m
Draught max	2.4 m
Deadweight max	Up to 20.0 t
Cargo deck area	100.0 m ²
Deck load	1.5 t/m ²
Deck cargo	15.0 t
Gross tonnage	168
Crew	Up to 8 persons
(Industrial) personnel	Up to 12 persons

TANK CAPACITIES

Fuel oil	14.2 m ³
Fuel oil trim	8.0 m ³
Fresh water	1.8 m ³
Sewage	0.5 m ³
Bilge water/ dirty oil	0.4 m ³

PERFORMANCES

Speed	Up to 25.0 kn
Range at max. speed	700 nm

PROPULSION SYSTEM

Main engines	2x Caterpillar C32 TTA
Total power	Up to 1,790 kW
Gearboxes	2x Reintjes ZWVSA series (two-speed)
Propulsion	2x Fixed pitch propeller
Bow thrusters	2x 50 kW, hydraulically driven

ELECTRICAL EQUIPMENT

Network	24V DC, 400/230V 50Hz AC
Generator sets	2x 22.5 kW

DECK LAY-OUT

Anchor equipment	1x 150 kg SHHP Pool TW, chain, electric winch
Fendering	Heavy-duty bow fender, rubber "D" type at sides

SHIP SYSTEMS

Ship systems are according to Class	
Fuel trim system	2x pump, electrically driven
Engine room ventilation	Supply, 8,000 m ³ /hr each (one fan in each engine room)
Air-conditioning	Up to 70,000 BTU/hr
Fire extinguishing	Novac 1230 in engine rooms

ACCOMMODATION

Bridge deck	Wheelhouse, personnel area
Main deck	Crew cabins, wet gear room, pantry, mess room, sanitary spaces
Lower deck	Storage

NAUTICAL AND COMMUNICATION EQUIPMENT

Integrated navigation system	
Remote monitoring system	
Searchlight	1x
Radar	1x X-band
AIS	1x
Compass	1x Magnetic, 1x GPS
Autopilot	1x
Echo sounder	1x
Internal communications	Intercom and loudhailer
External communications	GMDSS A2
Weather system	1x

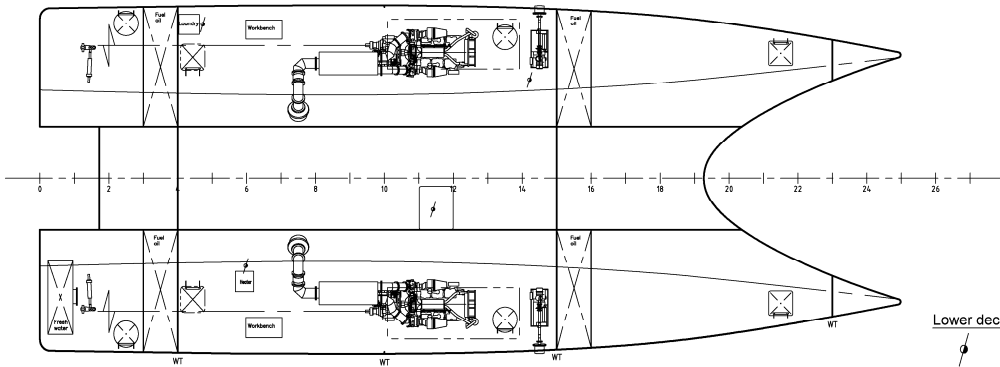
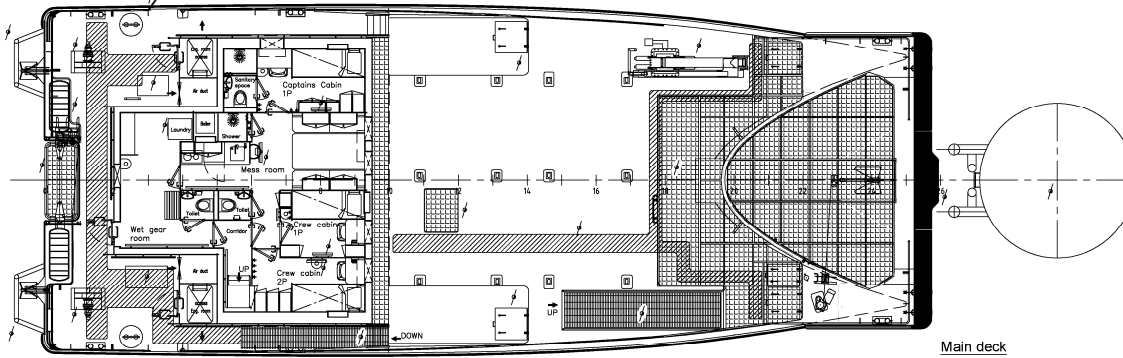
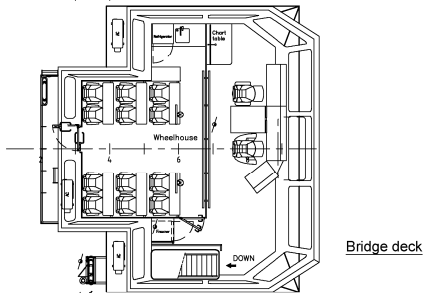
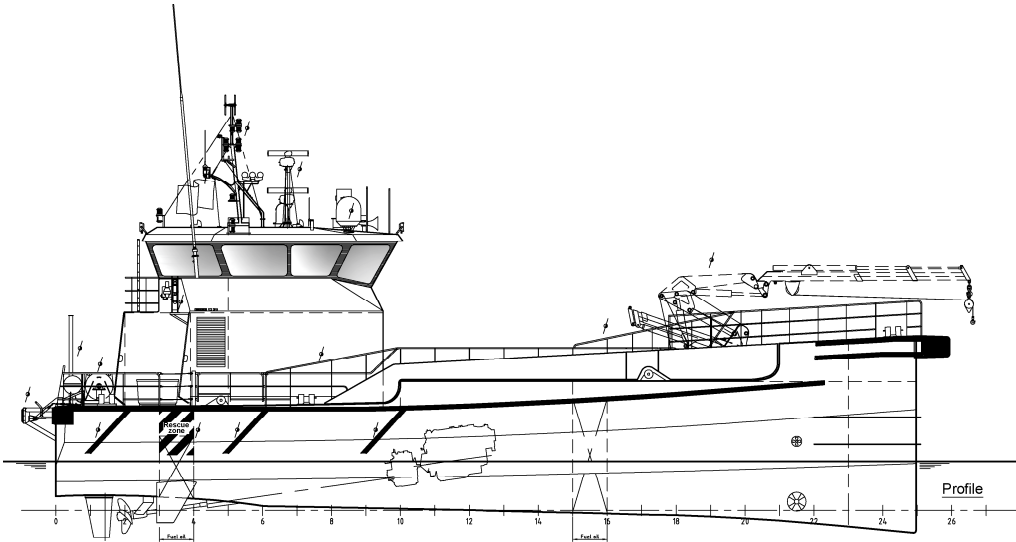
OPTIONAL

Flag	(MCA, BG Verkehr), DMA, ILT, St. Vincent
3 Point mooring	
Moonpool	
Hoisting equipment	Foldable deck crane, up to 20 tm
Rescue zone	
Rescue cradle	
Fuel cargo system	
Crew accommodation	1 additional cabin
Personnel accomm	Alternative seats (VIP), alternative layout
Various navigation equipment	
CCTV system	
External communication	GMDSS A3
Data communication	Iridium, V-SAT, Fleet broadband, 4G, Wi-Fi system, LAN system

DAMEN

FAST CREW SUPPLIER 2610

STOCK



Items marked with  are optional equipment

DAMEN SHIPYARDS GROUP

Avelingen-West 20
4202 MS Gorinchem
The Netherlands

P.O. Box 1
4200 AA Gorinchem
The Netherlands

phone +31 (0)183 63 99 22
fax +31 (0)183 63 21 89

info@damen.com
www.damen.com

© No part of the leaflet may be reproduced in any form, by print, photo print, microfilm, or any other means, without written permission from Damen Shipyards Group