



# STAN PATROL 2205 FRP

## STANDARD

### GENERAL

Hull material	FRP
Superstructure material	FRP
Basic functions	Patrol, surveillance and safety duties
Classification	Bureau Veritas I * Hull • MACH Light Ship / Fast Patrol Boat Sea Area 3

### DIMENSIONS

Length overall	22.7 m
Beam overall	6.1 m
Depth at side	2.6 m
Draught max	1.5 m
Crew	Up to 8 persons

### TANK CAPACITIES

Fuel oil	5.0 m <sup>3</sup>
Fresh water	1.0 m <sup>3</sup>
Sewage	1.1 m <sup>3</sup>

### PERFORMANCES

Speed	30.0 kn
Range at max speed	300 nm

### PROPULSION SYSTEM

Main engines	2x MTU 10V2000 M72
Total Power	1,800 bkW
Gearboxes	2x Twin Disc MGX 6599 RV
Propulsion	2x fixed pitch propellers

### ELECTRICAL EQUIPMENT

Network	24V dc, 230V 50 Hz AC
Generator set	22.5 ekW

### DECK LAY-OUT

Anchor equipment	1x Fortress, chain and line
Fendering	Rubber "D"-fender

### SHIP SYSTEMS

General service pump	1x electrically driven
Engine room ventilation	2x 7,500 m <sup>3</sup> /hr
Fire extinguishing	Hand operated fire extinguishers. Fixed fire-fighting system in engine room (Aerosol)

### ACCOMMODATION

Main deck	8x motion damped seats
Below main deck	Mess, pantry, toilet, shower, stores and cabins
Air conditioning	Up to 96,000 BTU/hr

### NAUTICAL AND COMMUNICATION EQUIPMENT

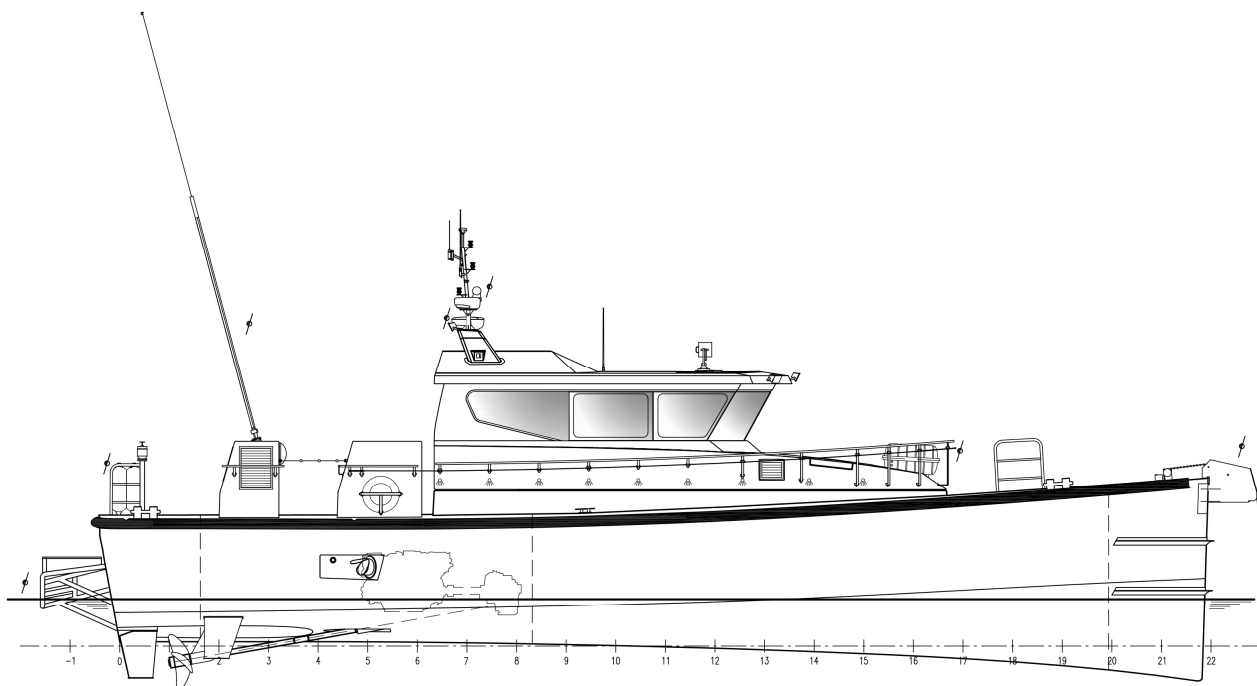
Searchlight	1x
Radar	1x
GPS	1x
AIS	1x
Compass	1x Magnetic
Heading sensor	1x
Echo sounder	1x
VHF	1x
EPIRB	1x
SART	1x
Wind measuring system	1x

### OPTIONAL

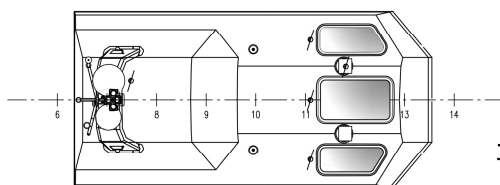
External communication	GMDSS A1/A2
Second generator	22.5 ekW
Domestic network	115v, 60Hz
Slipway	RHIB 4.8m
Navigator seat	
Second searchlight	
Second radar	
Chart plotter/ECDIS	
Autopilot	
CCTV system	
Night vision camera	
Military equipment/ballistic protection	

# STAN PATROL 2205 FRP

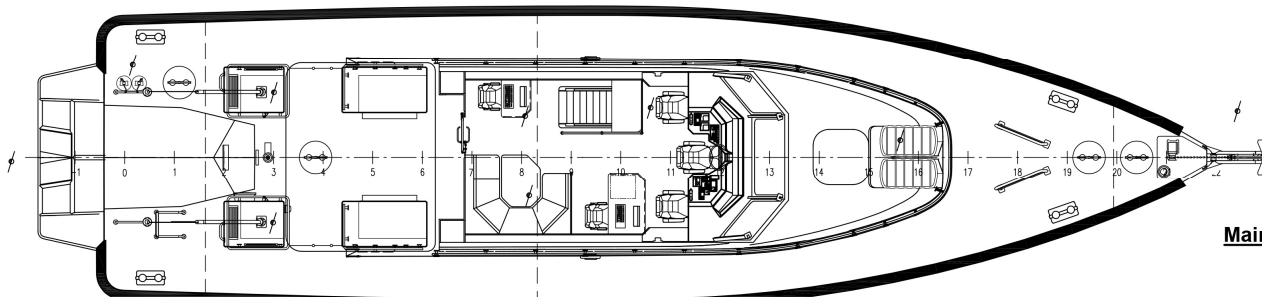
## STANDARD



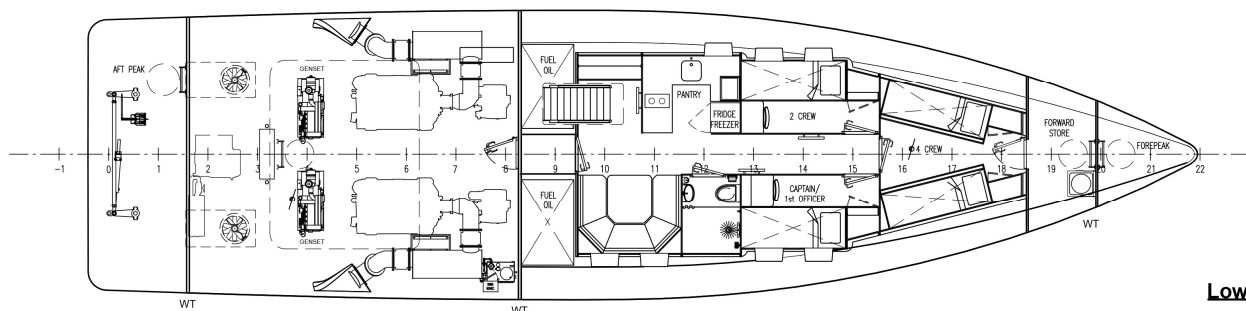
**Profile**



**Top Deck**



**Main Deck**



**Lower Deck**



Items marked with  are optional equipment

DAMEN SHIPYARDS GROUP

Avelingen-West 20  
4202 MS Gorinchem  
The Netherlands

P.O. Box 1  
4200 AA Gorinchem  
The Netherlands

phone +31 (0)183 63 99 22  
fax +31 (0)183 63 21 89

info@damen.com  
[www.damen.com](http://www.damen.com)

© No part of the leaflet may be reproduced in any form, by print, photo print, microfilm, or any other means, without written permission from Damen Shipyards Group